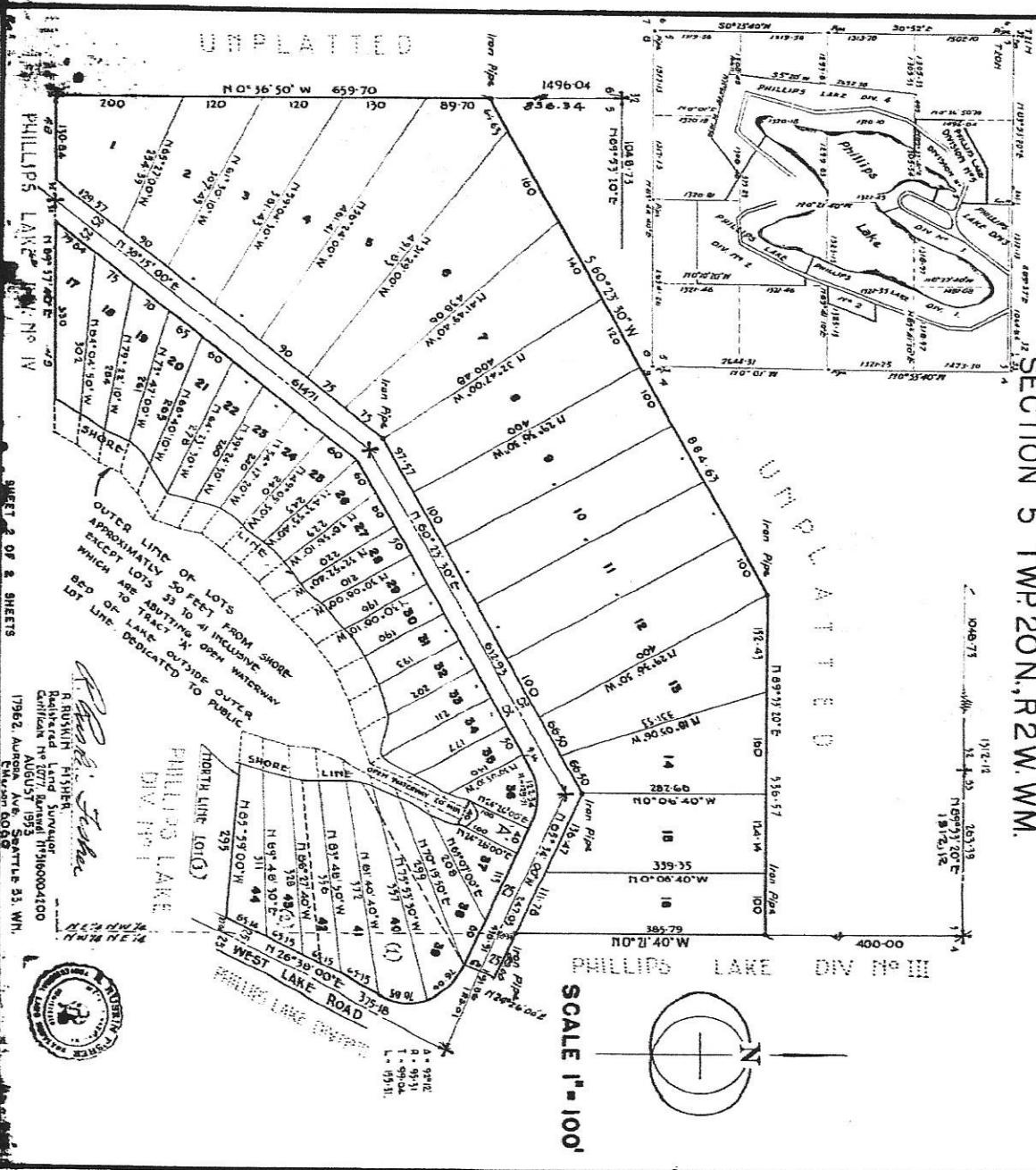


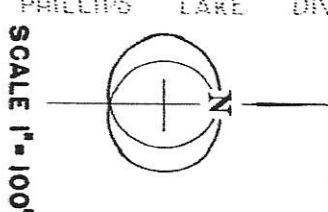
# PHILLIPS LAKE DIVISION NO. 5

## AN ADDITION TO MASON COUNTY, WASHINGTON

SECTION 5 TWP 20N, R 2W, WM.



R. ROSSMAN FISHER, Surveyor  
 Certified by the State of Washington  
 AUGUST 1953  
 17962, Aurora Ave., Seattle 33, Wn.  
 CLUVER 00000



SHEET 2 OF 2 SHEETS

UNPLATTED

UNPLATTED