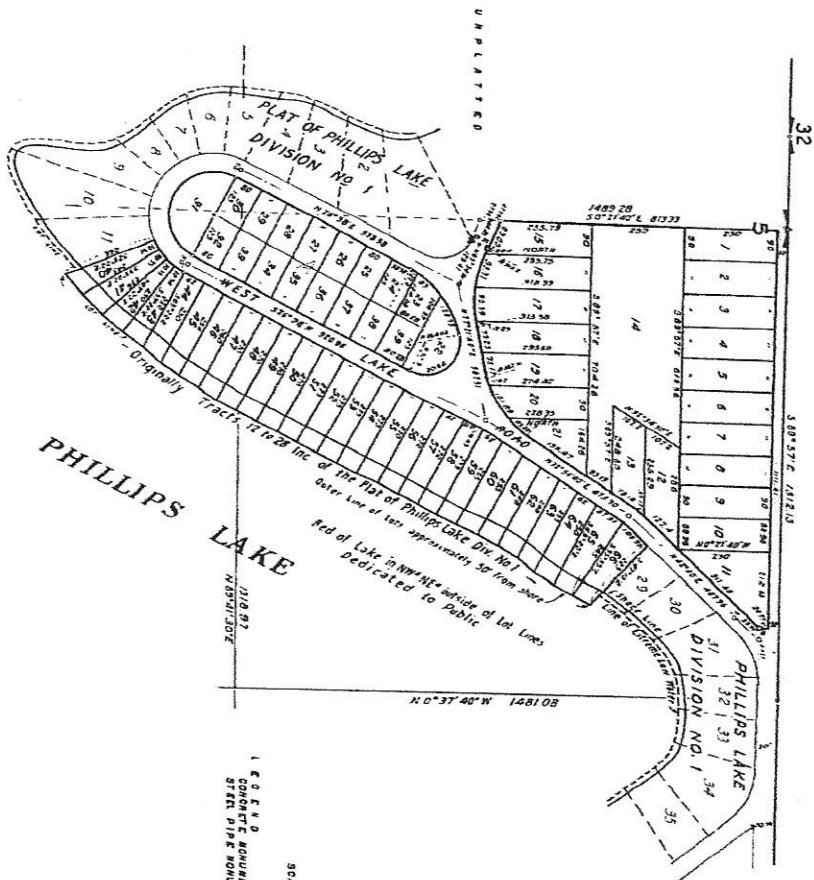


PHILLIPS LAKE

DIVISION NO. 3

SECTION 16
 TRACT 22nd AND TRACT 18th QUARTER OF THE
 PLAT OF PHILLIPS LAKE, DIVISION NO. 1,
 AND 1st
 THE NW 1/4 OF THE NE 1/4 OF SECTION 5, T 20 N. R. 2 W.
 IN BASSON COUNTY, WASH.



SCALE: 1 INCH = 400 FEET

1. 60 F.T.D
 CONCRETE MONUMENTS A
 STEEL PIPE MONUMENTS O

SURVEYOR'S CERTIFICATE

I, HENRIE B. WALKER, HEREBY CERTIFY THAT THIS PLAT IS BASED UPON
 AN ACTUAL FIELD SURVEY OF THE FOREGOING DESCRIBED PLAT, AND UPON
 THAT SURVEY OF SECTION 5, T. 20 N., R. 2 W., MADE BY
 ME, ON THE 15th DAY OF JULY, 1931, AND THAT THE PLAT
 IS ACCORDING TO THE ACTS OF CONGRESS AND THE
 ACTS OF THE LEGISLATURE OF THE STATE OF WASHINGTON,
 AND THAT THE MONUMENTS HAVE BEEN SET AND LOT AND BLOCK
 CORNERS STAKED ON THE GROUND, DATED THIS 15th DAY OF JULY, 1931.

HENRIE B. WALKER
 LAND SURVEYOR

