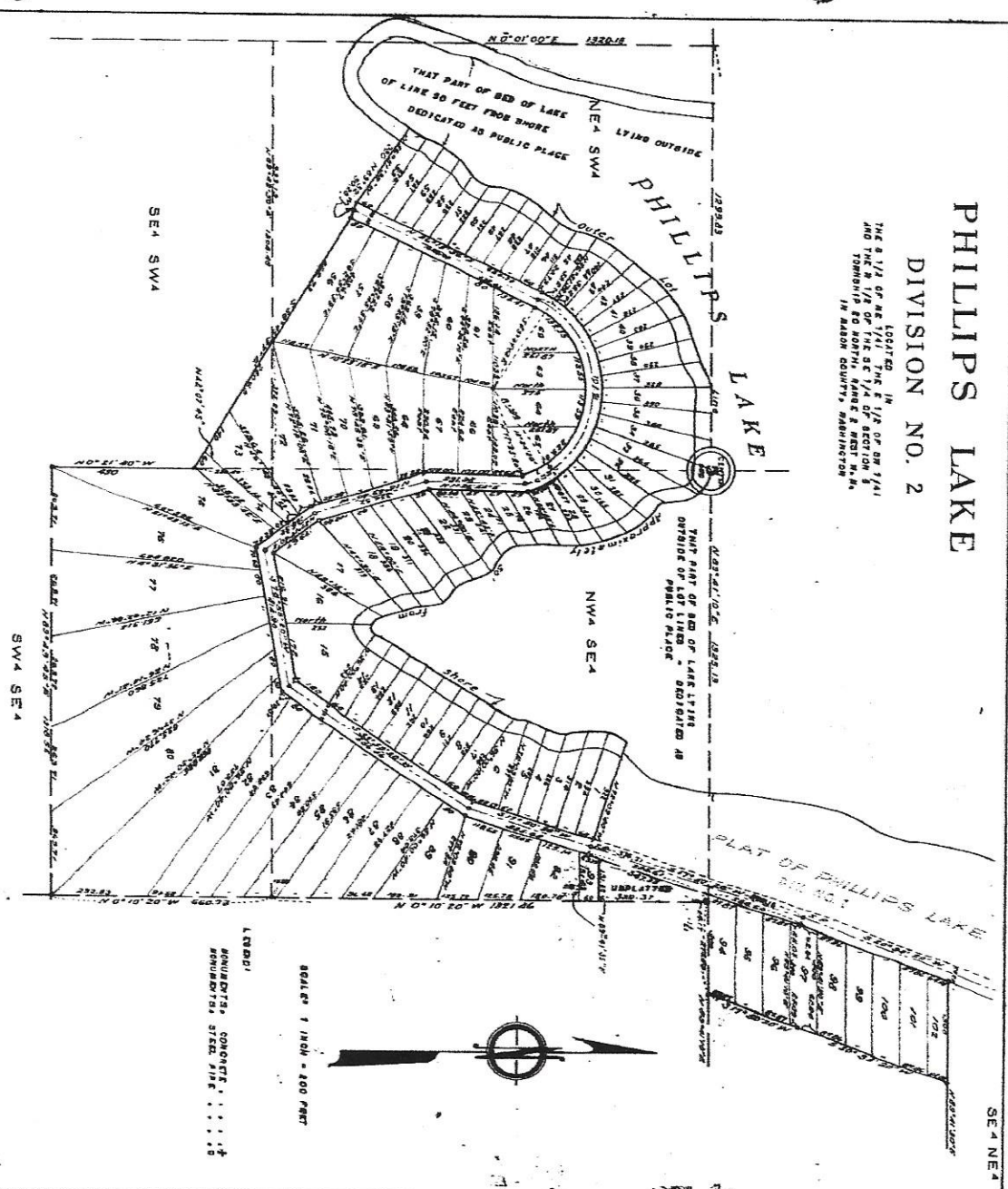


PHILLIPS LAKE

DIVISION NO. 2

LOCATED IN 1/4 OF SEC 34, 1/4 AND THE N 1/2 OF THE SEC 1/4 OF SECTION 5, TOWNSHIP 80 NORTH, RANGE 5 WEST, N.W. IN MASON COUNTY, WASHINGTON



SURVEYOR'S CERTIFICATE

I, HAROLD B. SMITH, HEREBY CERTIFY THAT THIS PLAT IS BASED UPON A FIELD SURVEY MADE BY ME AND ASSISTANTS, AND THAT THE SAME IS A TRUE AND CORRECT REPRESENTATION OF THE SAME AS THE SAME WAS MADE BY CLARENCE S. SMITH, PROFESSIONAL ENGINEER, AND ACCORDING TO THE RECORDS OF SAID COUNTY, WASHINGTON.

I OF PLATS AT PAGES 38 & 39, RECORDS OF MASON COUNTY, WASHINGTON, AND THAT THE SURVEY WAS MADE AND COMPLETED ON THE DATE AND THAT THE INSTRUMENTS USED WERE OF THE BEST QUALITY AND THAT THE INSTRUMENTS USED WERE OF THE BEST QUALITY AND THAT THE SURVEY WAS MADE AND COMPLETED ON THE DATE THIS 15TH DAY OF JULY 1951.

PROFESSIONAL ENGINEER
HAROLD B. SMITH
A LAND SURVEYOR

LEGEND:
 ANNOTATED CORNERS
 ANNOTATED STAKE

SCALE 1 INCH = 400 FEET