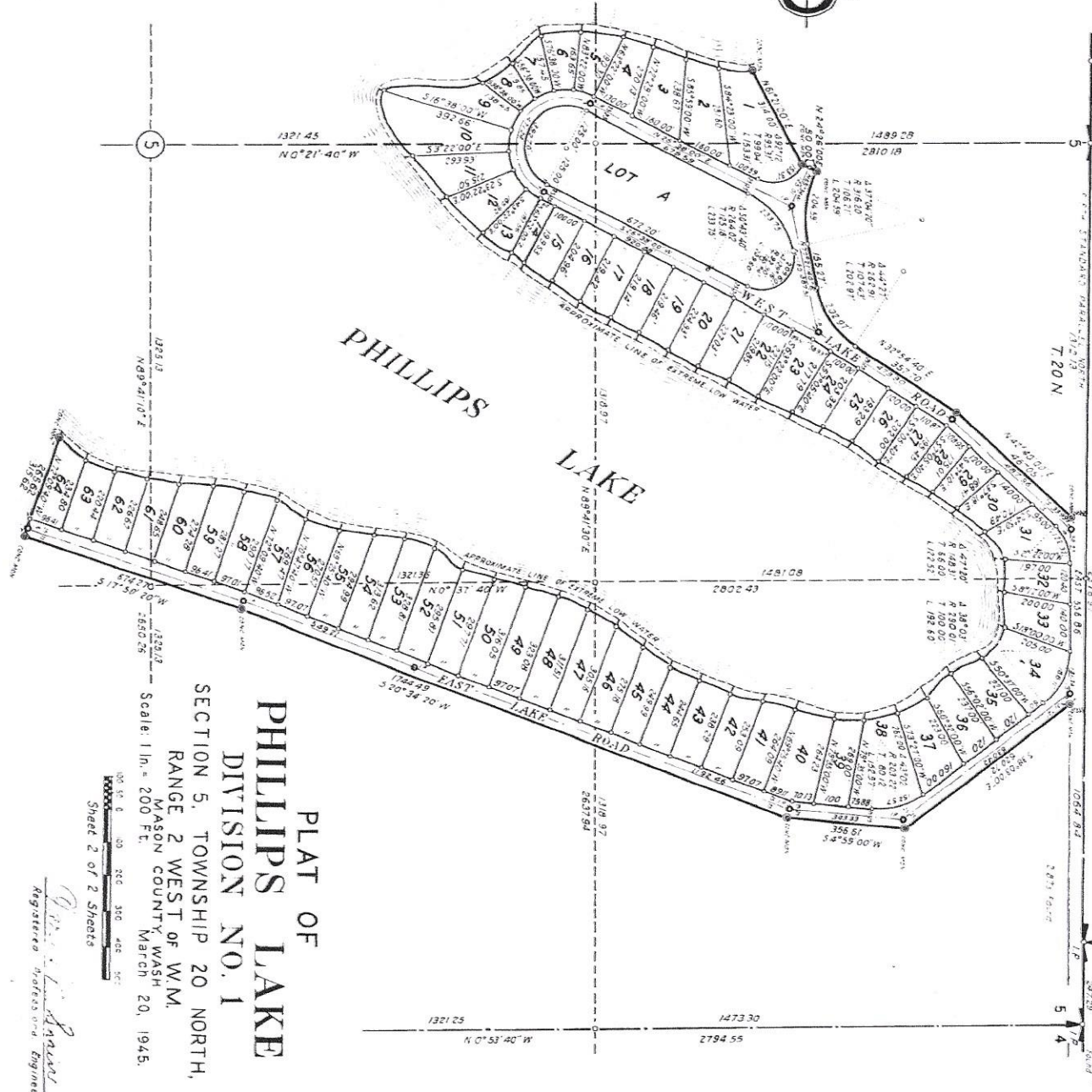
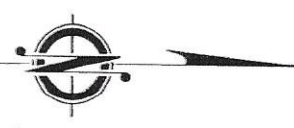


2 S 5 Swamp Road 32 28139 5 7 21 N
 7 21 N
 32 33 589'634'W 287'519'S
 5 A



PLAT OF
PHILLIPS LAKE
 DIVISION NO. 1
 SECTION 5, TOWNSHIP 20 NORTH,
 RANGE 2 WEST OF W.M.
 WASHINGTON COUNTY, WASH.
 March 20, 1945.

Scale: 1 in. = 200 Ft.
 Sheet 2 of 2 Sheets

Wm. L. ...
 Registered Professional Engineer